

BEER MENU

naeckte
brouwers

Tap sizes are 15cl., 25cl. and 50cl.
Standard a 25cl. glass is served.

Lichtekooi | Alcoholfree | 0,3% | € 5,20 (bottle 33 cl.)
Fresh, light and fruity beer with hints of citrus. Only 33 calories.
bitterness ●●●●● colour ●●●●● fruitiness ●●●●●

Spits | Classic Pilsner | 5,0% | € 3,00
An unfiltered beer as it was once intended.
bitterness ●●●●● colour ●●●●● fruitiness ●●●●●

Amazona | Session Ale | 3,8% | € 4,20
Refreshing, slightly salty beer with citrus notes from the hops.
bitterness ●●●●● colour ●●●●● fruitiness ●●●●●

Kølz | Kölsch style ale | 4,7% | € 4,20
Cologne-style beer, subtle taste of barley and noble hops.
bitterness ●●●●● colour ●●●●● fruitiness ●●●●●

Lieve | Amber - Spéciale Belge | 5,2% | € 4,20
Slightly sweet, malty beer, hint of caramel, refined bitter.
bitterness ●●●●● colour ●●●●● fruitiness ●●●●●

Elser | Kuit - Specialty Grain | 5,5% | € 4,20
Old Dutch wheat beer with oats, grassy bouquet supplemented with fresh citrus notes.
bitterness ●●●●● colour ●●●●● fruitiness ●●●●●

Dirndl | Hefeweizen | 5,5% | € 4,20
German style cloudy wheat beer with banana, citrus notes.
bitterness ●●●●● colour ●●●●● fruitiness ●●●●●

Zonnegloed | Farmhouse Ale | 5,8% | € 4,50
Thirst-quenching saison with wood and fruit notes.
bitterness ●●●●● colour ●●●●● fruitiness ●●●●●

Feeks | Belgian Blonde | 6,0% | € 4,20
Blond beer with a floral touch and fruity aftertaste.
bitterness ●●●●● colour ●●●●● fruitiness ●●●●●

Mosaic | India Pale Ale | 6,8% | € 4,50
Single Hop IPA with notes of mandarin, citrus and passion fruit.
bitterness ●●●●● colour ●●●●● fruitiness ●●●●●

Noorderlicht | Imperial saison | 7,5% | € 4,50
Amber colored saison, notes of wood and ripe red fruit.
bitterness ●●●●● colour ●●●●● fruitiness ●●●●●

Naeckte Non | Belgian Dubbel | 7,5% | € 4,50
Caramel and chocolate notes, bittersweet finish.
bitterness ●●●●● colour ●●●●● fruitiness ●●●●●

Nimf | Belgian Tripel | 8,5% | € 4,80
Heavy blond beer, spicy taste and slightly sweet aftertaste.
bitterness ●●●●● colour ●●●●● fruitiness ●●●●●

Grand Cru | Belgian Strong Dark Ale | 9,0% | € 5,10
Gentle warming beer with notes of caramel and chocolate.
bitterness ●●●●● colour ●●●●● fruitiness ●●●●●

Elegast | Quadrupel | 10,0% | € 5,10
Copper colored beer, bittersweet grain and caramel flavour.
bitterness ●●●●● colour ●●●●● fruitiness ●●●●●

Fortuna Vlieland x Naeckte | **Storm Stout** | Irish Dry Stout | 5,5% | € 4,80
Collab Smooth, black beer, hints of coffee and chocolate.
bitterness ●●●●● colour ●●●●● fruitiness ●●●●●

De Leckere x Naeckte | **Classic IPA** | English IPA | 5,0% | € 4,50
Collab Classic IPA, malty, fresh as grass, spicy.
bitterness ●●●●● colour ●●●●● fruitiness ●●●●●

Wispe brouwerij | **Wit** | Wheat beer - Witbier | 4,8% | € 4,50
Guest Slightly spicy beer with coriander, orange peel and elderflower.
bitterness ●●●●● colour ●●●●● fruitiness ●●●●●



Radler | Radler | 3,2% | € 4,95 (bottle 33cl.)
With the refreshing taste of citrus fruit. Thirst quenching and not sweet.
bitterness ●●●●● colour ●●●●● fruitiness ●●●●●

Beach Boy | Tropical Lager | 3,7% | € 5,50 (bottle 33cl.)
Light and tasty lager with hints of tropical fruit.
bitterness ●●●●● colour ●●●●● fruitiness ●●●●●

Sunshine Shake | Session New England IPA | 4,8% | € 4,50
Wonderfully fresh and hazy, full of tropical fruit hop aromas.
bitterness ●●●●● colour ●●●●● fruitiness ●●●●●

Lighthouse | Farmhouse Ale | 5,5% | € 4,50
Blond-colored saison with a spicy and citrusy character.
bitterness ●●●●● colour ●●●●● fruitiness ●●●●●

Oceanic Flight | India Pale Ale | 6,5% | € 4,80
Gold colored IPA with the fruity scents of peach and citrus.
bitterness ●●●●● colour ●●●●● fruitiness ●●●●●

Gigantic Sailor | Double India Pale Ale | 8,0% | € 4,80
Powerful, hoppy and malty IPA full of fruit aromas.
bitterness ●●●●● colour ●●●●● fruitiness ●●●●●

Eembier & Pontus Brewing | **Pale Hops** | Pale Ale | 7,5% | € 4,80
Collab Powerful blond beer with delicious hop aromas.
bitterness ●●●●● colour ●●●●● fruitiness ●●●●●

Naeckte in het Wild
Beers brewed with special yeast cultures. These beers have developed unique aromas and exciting, complex flavors.

Polaris | Grisette | 3,3% | € 8 (bottle 37,5 cl.)
Light beer with the sweet smell of straw, yellow fruit and citrus fruits. The fresh and sour aftertaste makes it a nice thirst quencher.
bitterness ●●●●● colour ●●●●● fruitiness ●●●●●

Alpha Centauri | White Grape Ale | 4,9% | € 9 (bottle 37,5 cl.)
Dark blond beer with the smell of the outside and taste of white fruit.
bitterness ●●●●● colour ●●●●● fruitiness ●●●●●

Alpha Aurigae | Red Grape Ale | 4,9% | € 9 (bottle 37,5 cl.)
Purple colored beer with the smell of red fruit and black cherries.
bitterness ●●●●● colour ●●●●● fruitiness ●●●●●

Celaeno | French Farmhouse Ale | 5,0% | € 8,50 (bottle 37,5 cl.)
Bronze colored beer with the subtle scent of white grapes and spiciness of black pepper. This beer has rested for five months in Vouvray wine barrels.
bitterness ●●●●● colour ●●●●● fruitiness ●●●●●

Haedi | Brett Farmhouse Ale | 5,9% | € 8,50 (bottle 37,5 cl.)
Blond-colored beer aged four months with spicy aromas, smell of straw, blossom, taste of green apples.
bitterness ●●●●● colour ●●●●● fruitiness ●●●●●

Maia | Haverblond | 5,9% | € 8,50 (bottle 37,5 cl.)
Blonde beer with an earthy aroma, ripe yellow fruit scents, blossom spiciness, aged four months.
bitterness ●●●●● colour ●●●●● fruitiness ●●●●●

Zaniah | Goudblond | 6,5% | € 9 (bottle 37,5 cl.)
Golden blond beer with a floral and fruity scent, flavors of white grapes and ripe pineapple. This beer has rested for five months in Vouvray wine barrels.
bitterness ●●●●● colour ●●●●● fruitiness ●●●●●

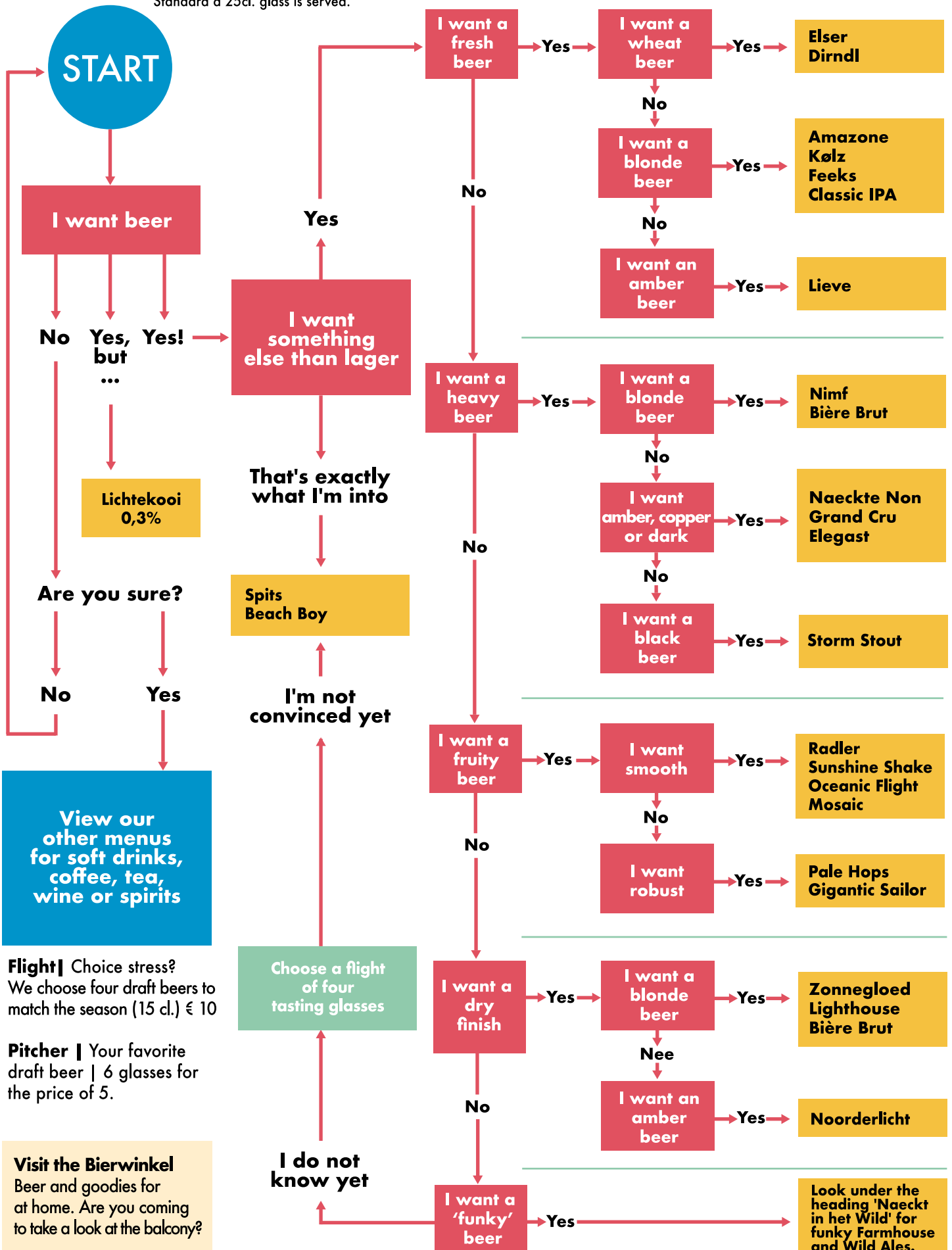
Helios | Belgian Wild Ale | 6,6% | € 9 (bottle 37,5 cl.)
Scents of vanilla, spices, fresh straw. Subtle taste of fresh sour red grapes.
bitterness ●●●●● colour ●●●●● fruitiness ●●●●●

Nashira | Bière de Garde | 7,9% | € 9 (bottle 37,5 cl.)
Amber colored beer that has been aged in oak Médoc red wine casks for eight months. Smells of sweet straw and malt, taste of caramel, red fruit.
bitterness ●●●●● colour ●●●●● fruitiness ●●●●●

Bière Brut | Champagnebier | 9,0% | € 20 (bottle 75 cl.)
Fermented with champagne yeast and therefore has properties of white grapes. A sparkling beer with a dry aftertaste.
bitterness ●●●●● colour ●●●●● fruitiness ●●●●●

BEER POINTER

Tap sizes are 15cl., 25cl. and 50cl
Standard a 25cl. glass is served.



Flight | Choice stress?
We choose four draft beers to match the season (15 cl.) € 10

Pitcher | Your favorite draft beer | 6 glasses for the price of 5.

Visit the Bierwinkel
Beer and goodies for at home. Are you coming to take a look at the balcony?